



VENTO WATER

Plug-in multideck chiller.



**PLUG AND CHILL.
SIMPLE ECONOMICAL CHILLING.**

THE FLEXIBLE ALL-INCLUSIVE MULTIDECK. STATE-OF-THE-ART ECONOMIC CHILLING.

AHT offers a fresh take on multideck chillers with the all-new VENTO WATER. This revolutionary series of plug-in multidecks for meat and dairy products provides impressive flexibility, requires minimal installation and boasts sustainability in operation and investment. The innovative concept of fully integrated refrigeration technology reduces system complexity and installation work to a minimum. Extremely versatile, for open use or equipped with glass doors, VENTO WATER is the ideal up-to-date multideck solution!

Your advantages

- | Completely flexible, connectable plug-in shelf units
- | No heat discharge into the store due to efficient and environment-friendly heat removal using water as the only medium; no refrigerants
- | Fully hermetical sealed refrigeration system with environment-friendly refrigerants in small amounts
- | Full integration of all required refrigeration components into the shelf units prevents refrigerant loss
- | Pipe segments for waste heat circuit pre-installed on shelf units
- | Fast setup thanks to »Plug and Chill« technology – no substantial installation work required
- | Optimized space usage due to standard footprint
- | Total freedom of layout in the store as well as simple repositioning and system expansion – even in existing stores
- | Minimal maintenance requirements



Temperature ranges*

- | | |
|------------------------|------------------|
| Ground meat | +2 °C bis –1 °C |
| Packed meat, cold cuts | +4 °C bis –1 °C |
| Fish | +5 °C bis –1 °C |
| Dairy products | +7 °C bis –1 °C |
| Beverages | +7 °C bis –1 °C |
| Fruit and vegetables | +10 °C bis –1 °C |

*Country- and operator-specific variations are possible

Accessories

- | **Side wall:** solid, mirrored inside or panoramic
- | **Dividing wall:** solid or mirrored inside
- | **Separator**
- | **Shelves**
- | **Shelf lighting**
- | **LED interior lighting**
- | **Scanner price rails**
- | **Bumpers, protection bars**
- | **Mirrored ceiling**
- | **Energy saving blind tear-proof**
- | **Dividers:** steel sheet, wire or plastic
- | **Merchandise stoppers:** steel sheet, wire or plastic



Retrofitting sets

- | Glass swinging door
- | Glass sliding/swinging door combination:
for fast loading, the swinging doors can be pushed aside into neighboring sections – if units are row placed, the doors can even be pushed beyond the shelf ends!
- | LED lighting

Options

- | Connection to store monitoring system

Other multideck variants

VENTO FLEX

- | The compact all-inclusive multideck

VENTO AIR

- | Quick and easy setup without installation work

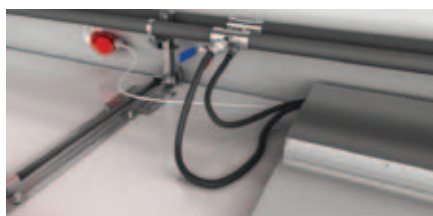
VENTO HYBRID

- | Efficient waste heat discharge via air or water including automatic switching between modes

VENTO ROLL-IN

- | Extremely fast front-side loading with rolling containers and pallets

Patented »Plug & Chill« technology reduces setup and installation times to an absolute minimum!

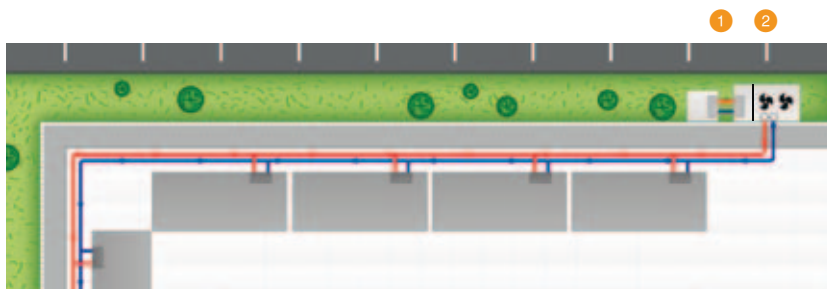


»Plug and Chill«:

Intelligent plug-and-socket links for all installation and shelf unit connections ensure quick and easy setup.

»Move it«:

Shelf modules can be easily added, removed or repositioned at any time. Ideal for rearranging or moving the entire system when remodeling or changing your store location.



The **1** backcooler and the **2** pump station form the compact and highly efficient waste heat system.

A detailed technical overview can be found in the additional waste heat units leaflet.

Environment-friendly waste heat discharge solution using water as the only medium in the waste heat circuit. Simple water piping allows extremely quick installation and reliable, low-maintenance operation over the system's entire life cycle. Optimal technical coordination of all components produces an efficient and economical multideck chiller system at a competitive price.

Shelf unit lengths

375 cm, 250 cm

Shelf heights

L – LOW 211 cm

H – HIGH 231 cm

Shelf depths

Inside: 60 cm, outside 106 cm

Inside: 70 cm, outside 116 cm

Inside: 80 cm, outside 126 cm



AHT Cooling Systems GmbH
 8786 Rottenmann · Austria
 Phone +43/(0)3614/2451-0
 Fax +43/(0)3614/2451-8
 Email office@aht.at

ISO 9001, ISO 14001